

LED Manual Control Panel

User Manual



Model: 810A

Operating Voltage: DC24V / DC36V / DC48V

Functions: Power Switch (Electric Door Lock)

Battery Level Indication

Three-Gear Motor Power Control

6km/h Inching Control

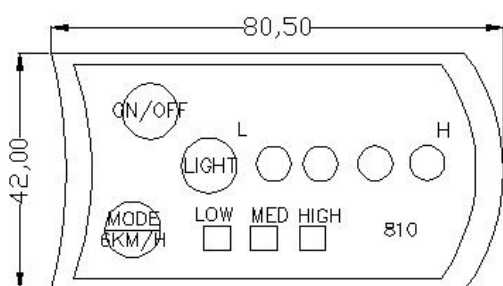
Light Switch

Auto-Hibernation after 10min Idleness

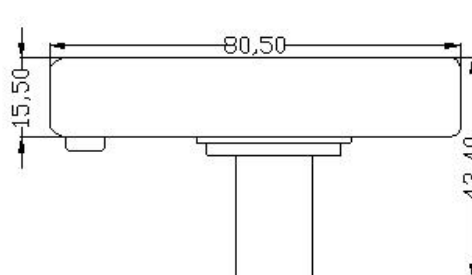
1. Exterior Parameters

Casing Material: ABS

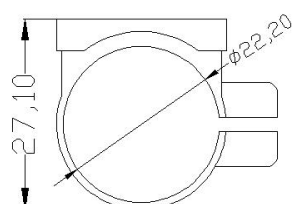
Workable Temperature: -20 °C -60 °C with guaranteed mechanical properties.



Front View



Side View



Side View of the Support Stand

2. User Instructions

Connections:

1. Connect the red wire to the positive.
2. Connect the black wire to the negative.
3. Connect the blue wire to the controller of the electric door lock.
4. Connect the green wire to the controller of the motor power intensity inching control wire.
5. Connect the yellow light to the positive.
6. Connect the white light to the negative.

1. Start



Press the button to power on the manual control panel, and the blue wire connected to it will deliver the same output voltage as the power source. The maximum operating current of the blue wire can reach 200mA.

2. Battery Level Indication



The LED indicators will show full bars when the



battery is fully charged. The LED indicator will start blinking continuously at low battery, which indicates a battery recharge asap.

3. Motor Power Intensity Control



Please refer to this section as the control and indicating part of the motor power intensity. The default intensity at boot is LOW, and the corresponding output voltage is 1V. The control signal of the motor power



intensity will shift at each press of the mode button. The control indicator will change from LOW to MED after pressing the mode button for the first time, when the corresponding output voltage is 2V. The control indicator will change from MED to HIGH after pressing the mode button for the second time, when the corresponding output voltage is 3V. When pressing the mode

button for the third time, the motor power indicator will be set back to LOW, and the output power will be reset to 1V.


4. 6km/h Inching Control




Power on the panel and press the 6km button in any status to set the output voltage of the motor power intensity wire to 4V, and the output will be reset to the original when the button is released.

5. Light Control



Power on the panel and press the light button , the yellow wire will give a positive voltage output (power input) and the light indicator  will be on.



When pressing the light button for the second time, the voltage output of the yellow wire will be cut off and the light indicator  will be off.