

## LED Manual Control Panel

### User Manual



**Model: 810-B3**

**Operating Voltage: DC24V / DC36V / DC48V**

**Functions: Power Switch (Electric Door Lock)**

**Battery Level Indication**

**Three-Gear Motor Power Control**

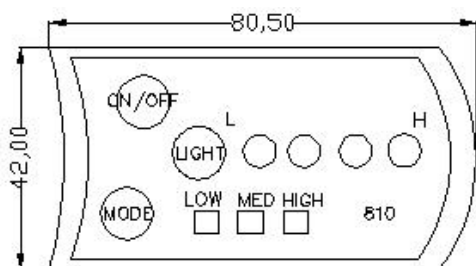
**Light Switch**

**Auto-Hibernation after 10min Idleness**

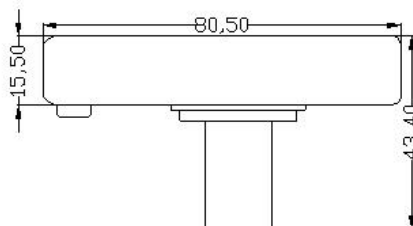
#### 1. Exterior Parameters

**Casing Material: ABS**

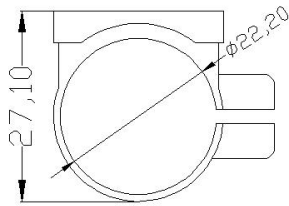
**Workable Temperature:** -20 °C -60 °C with guaranteed mechanical properties.



**Front View**



**Side View**



**Side View of the Support Stand**

## 2. User Instructions

### Connections:

1. Connect the red wire to the positive.
2. Connect the black wire to the negative.
3. Connect the blue wire to the controller of the electric door lock.
4. Connect the green wire to the controller of the motor power intensity inching control wire.
5. Connect the yellow light to the positive.
6. Connect the white light to the negative.

### 1. Start



Press the button to power on the manual control panel, and the blue wire connected to it will deliver the same output voltage as the power source. The maximum operating current of the blue wire can reach 200mA.

### 2. Battery Level Indication



The LED indicators will show full bars when the battery is fully



charged. The LED indicator will start blinking continuously at low battery, which indicates a battery recharge asap.

### 3. Motor Power Intensity Control



Please refer to this section as the control and

indicating part of the motor power intensity. The default intensity at boot is LOW, and the corresponding output voltage is 2V. The control signal of the motor



power intensity will shift at each press of the mode button . The control indicator will change from LOW to MED after pressing the mode button for the first time, when the corresponding output voltage is 3V. The control indicator will change from MED to HIGH after pressing the mode button for the second time, when the corresponding output voltage is 4V. When pressing the mode button for the third time, the motor power indicator will be set back to LOW, and the output power will be reset to 2V.

#### 4. Light Control



Power on the panel and press the light button , the yellow wire will



give a positive voltage output (power input) and the light indicator will



be on. When pressing the light button for the second time, the voltage



output of the yellow wire will be cut off and the light indicator will be off.